



SERIE 098 ■

HYDRAULIC COUPLINGS
HYDRAULIK KUPPLUNGEN



ROBOTIC COUPLINGS ROBOTER KUPPLUNGEN

ROBOTIC TOOL CHANGER COUPLERS
ROBOTER WERKZEUGWECHSELSYSTEM
KUPPLUNG)

Working Pressure - Betriebsdruck

16 Bar - Standard
100 Bar - Stainless Steel - Edelstahl (AISI 303)

Standard version - Standardversion

Seal- Dichtungen : Florocarbon (V)

Material - Material

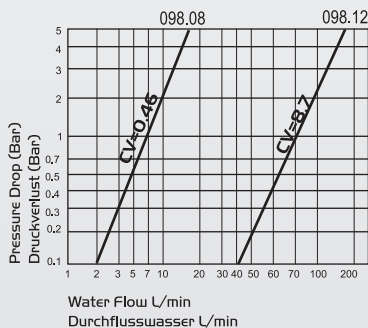
Coupler & Plug body -
Kupplungsgrundkörper
& Nippel : Brass - Messing
Valve - Ventil : Brass - Messing
Springs - Federn : Stainless Steel -
Edelstahl
Seals - Dichtungen : Florocarbon (V)

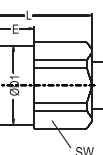
Applications

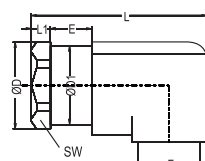
Multi couplers for the mould
Robotic tool changer couplers.

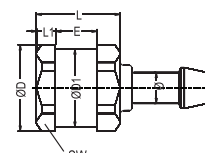
Anwendungen

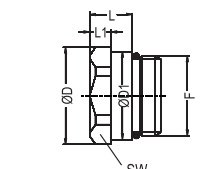
Multikupplungssysteme
Roboter Werkzeugwechselsystem
Autokupplung



Couplings Kupplung	Body Size Größen	Connection Anschlüsse F / Ø	Order No Bestellnr.	ØD	ØDI	L	LI	E	SW
 Female Threaded Shut-off Coupler Kupplung mit Innengewinde	08	BSP 3/8"	098.08 DGB 17	29.5	26.9	40.5	6.5	14.2	27
	12	BSP 3/4"	098.12 DGB 26	41.8	37.9	44	6.5	14.2	38
	12	BSP 1/2"	098.12 DGB 21	41.8	37.9	44	6.5	14.2	38

 90° Female Threaded Shut-off Coupler Kupplung mit 90° Innengewinde	08	BSP 3/8"	098.08 DGB 17-90	29.5	26.9	50	6.5	14.2	27
	12	BSP 3/4"	098.12 DGB 26-90	41.8	37.9	59	6.5	14	38

 Hose Tail Shut-off Coupler Kupplung mit Schlauchtülle	08	Ø 12	098.08 HGB 12	30	30	31.5	6.3	14	27
	12	Ø 16	098.12 HGB 16	42	42	35	6.3	14	38

 Male Threaded Shut-off Coupler Kupplung mit Aussengewinde	08	M24x1.5	098.08 EGBM 24	29.5	26.9	13	6.5		27
	12	M33x1.5	098.12 EGBM 33	41.8	37.9	13	6.5		38

HYDRAULIC COUPLINGS
HYDRAULIK KUPPLUNGEN

■ SERIE 098

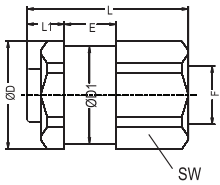


MANIFOLD & ROBOTIC COUPLINGS ROBOTER MULTIKUPPLUNGEN



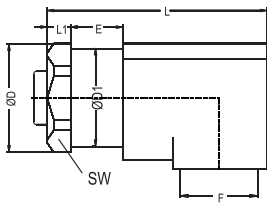
Nippel Plug

Body Size Größen	Connection Anschlüsse F / Ø	Order No Bestellnr.	ØD	ØDI	L	LI	E	SW
---------------------	-----------------------------------	------------------------	----	-----	---	----	---	----



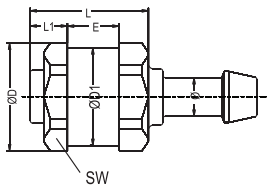
Female Threaded
Shut-off Plug
Nippel mit Innengewinde

08	BSP 3/8"	098.08 DUB 17	29.5	26.9	46	12	14.2	27
12	BSP 3/4"	098.12 DUB 26	41.5	37.9	49.5	12	14.2	38
12	BSP 1/2"	098.12 DUB 21	41.5	37.9	49.5	12		



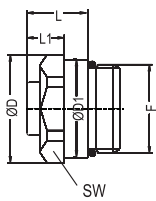
90° Female Threaded
Shut-off Plug
Nippel mit 90°
Innengewinde

08	BSP 3/8"	098.08 DUB 17-90	29.5	26.9	18.5	12	14.2	27
12	BSP 3/4"	098.12 DUB 26-90	41.5	37.9	18.5	12	14.2	38



Hose Tail Shut-off Plug
Nippel mit Schlauchtülle

08	Ø 12	098.08 HUB 12	30	27	36.7	11.5	14	27
12	Ø 16	098.12 HUB 16	42	38	40.5	11.8	14	38



Male Threaded
Shut-off Plug
Nippel mit Aussengewinde

08	M24x1.5	098.08 EUBM 24	29.5	26.9	18.5	12		27
12	M33x1.5	098.12 EUBM 33	41.5	37.9	18.5	12		38

