



SERIE **068** ■

PNEUMATIC COUPLINGS
PNEUMATISCHE KUPPLUNGEN



SUPER FLOW LINE **SUPER DURCHFLUSS**

Interchangeability - Kompatibilität
RECTUS 68, SCHRADER HEAVY DUTY

Temperature Range - Temperaturbereich
-20°C +100°C (-4°F +212°F)

Working Pressure - Betriebsdruck
0 - 35 bar (0 - 508 PSI)

Flow capacity - Nennweite
NW - 8.5

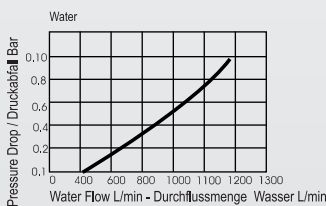
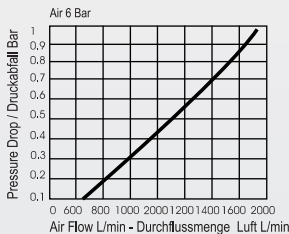
Option - Optionen

- F - Straight through flow - ungehinderter Durchfluss
- S - Stainless Steel - Edelstahl
- V - Viton Seal - Viton Dichtung

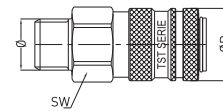
For optional orders please add the symbol of your option end of the order no.
Bei Optionsbestellungen Kennbuchstabe bitte hinzufügen

Material - Material

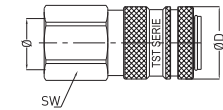
- Coupler Body - Kupplungsgrundkörper: Steel Nickel Plated - Stahl vernickelt
- Back Part - Hinterteil: Steel Nickel Plated - Stahl vernickelt
- Sleeve - Hülse: Steel Nickel Plated - Stahl vernickelt
- Valve - Ventil: Zinc Diecasting - Zinkdruckguß vernickelt
- Springs - Federn: Stainless Steel - Edelstahl
- Locking O-Ring - Sprengring: Stainless Steel - Edelstahl AISI 420
- Pins - Stifte: Stainless Steel - Edelstahl
- Seals - Dichtungen: Nitrile (Ni) - NBR (Ni)
- Plug - Nippel: Steel Nickel Plated - Stahl vernickelt



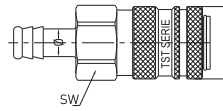
Couplers and Plugs
Kupplungen und Nippel



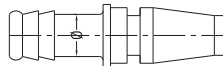
Male Threaded Coupling
Kupplung mit Aussengewinde



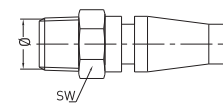
Female Thread Coupling
Kupplung mit Innengewinde



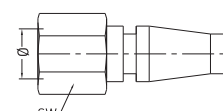
Standard Hose Barb Coupling
Kupplung mit Schlauchtülle



Standard Hose Barb Plugs
Nippel mit Schlauchtülle



Male Thread Plug
Nippel mit Aussengewinde



Female Thread Plugs
Nippel mit Innengewinde

Connection Anschlüsse	Order No Bestellnr.	SW	L	ØD
--------------------------	------------------------	----	---	----

BSP 3/8"	068 EG 17	27	65,7	30
BSP 1/2"	068 EG 21	27	67,7	30
BSP 3/4"	068 EG 26	30	71,7	30

BSP 1/4"	068 DG 13	27	66,7	30
BSP 3/8"	068 DG 17	27	67,7	30
BSP 1/2"	068 DG 21	27	69,7	30
BSP 3/4"	068 DG 26	32	73,7	30

10 mm - 3/8"	068 HG 10	27	80,7	30
13 mm - 1/2"	068 HG 13	27	80,7	30
19 mm - 3/4"	068 HG 19	27	80,7	30

10 mm - 3/8"	068 HU 10		70	
13 mm - 1/2"	068 HU 13		70	

BST P 1/4"	068 RU 13	19	49	
BSPT 3/8"	068 RU 17	19	50	
BSPT 1/2"	068 RU 21	22	52	
BSPT 3/4"	068 RU 26	27	53	

BSP 1/4"	068 DU 13	19	40	
BSP 3/8"	068 DU 17	21	43	